

1 Introduction

This file displays an auxiliary document that describes various programs and their functions with structured pages. An outline page consists of a certain number of lines. One line contains a limited number of fields. A field content can be a text, image, video or animation. Images and videos can also be downloaded or played directly from the Internet. All outlines and fields can also be displayed with a colored background, rounded or with shadows and borders.

The file format describes the project file for the program "HelpWriter". The file extension is called ".tdhw" (Two Dimension Help Writer).

Version 2

Significant changes in this file format have been made for the enlarged views of outlines and pages in the document. For this purpose, a document factor (see 4.11) has been added, which is used for a uniform display size of the field contents.

2 Value types

Type	Description	Area
INT8	8Bit with sign	-128 to 127
INT16	16Bit with sign	-32.768 to 32.767
INT32	32Bit with sign	-2.147.483.648 to 2.147.483.647
INT64	64Bit with sign	-9.223.372.036.854.775.808 to 9.223.372.036.854.775.807
BYTE	8Bit unsigned	0 to 255
UINT16	16Bit unsigned	0 to 65.535
UINT32	32Bit unsigned	0 to 4.294.967.295
UINT64	64Bit unsigned	0 to 18.446.744.073.709.551.615
CHAR	8Bit character	0 to 255
WCHAR	16Bit character	0 to 65.535
FLOAT	32Bit floating point	$\pm 1.5e-45$ to $\pm 3.4e38$
DOUBLE	64Bit floating point	$\pm 5.0e-324$ to $\pm 1.7e308$
MEMORY	Memory in bytes	
...[]	Array	see section 2.1
-> {	Start of the loop	see section 2.2
} <-	End of the loop	see section 2.2
...	Next table	see section 2.3
...!	Table with condition	see section 2.4
!	Dependence	see section 2.5
Value	removed	see section 2.6
Value	added	see section 2.7
Value	changed	see section 2.8

Table 2: Value types

2.1 Array

The set consists of a specific value type. The count of the set is detailed in the information and is usually the previous format value.

Example:

A Array INT16[] contains a certain count of INT16 values { INT16, INT16, INT16, INT16, ... }.

INT16[], BYTE[], UINT32[], WCHAR[], usw.

2.2 The loop

In a loop, the format is repeatedly run through. The count of run through is specified in detail in the information and is usually the previous value.

2.3 Next table

The file format is displayed further in the section and the table specified.

2.4 Next table with condition

The file format continues in the section and the table if the condition is met.

2.5 Dependence

The value exists only in the file when a specific condition is met.

2.6 Removed

The values marked in red have been removed and are no longer available in this format.

2.7 Added

The green marked values have been added to the format.

2.8 Changed

If values or memories have been marked in blue, the contents have been changed to the previous version.

3 Description

3.1 File format

Type	Name	Description	Info
UINT32	IDNumber	The file must have the ID number (0x57484454).	4.1
INT32	FileCount	The number of document files.	4.2
INT64	FileSize	The size of a single file in bytes.	4.3
INT64	FileMaxSize	The size of the entire document in bytes.	4.4
BYTE	Version	The version number is 1 in this file format.	4.5
UINT16	Flags	The bit values for the file format.	4.6
...!	Flags = 0x0001	3.2 Preview format, Table 3.2	
...!	Flags = 0x0002	3.3 Symbol format, Table 3.3	
...!	Flags = 0x0004	3.4 Information format, Table 3.4	
UINT32	SettingBackColor	The background color for the document.	4.7
UINT32	SettingWindowColor	The window color for the document.	4.8
INT32[]	SettingOutline	The distances to the outline of structure.	4.9
INT32[]	SettingPage	The distances to the page content.	4.10
DOUBLE	SettingDocumentFactor	The display size for the document.	4.11
INT32	LanguageCount	The number of languages used.	4.12
-> {	Language		
BYTE	LanguageLetterLength	The number of characters for language abbreviation.	4.13
WCHAR[]	LanguageLetter	The abbreviation of the language with two letters.	4.14
}	<-	Language	
...		3.5 Text format, Table 3.5	
...		3.8 Field image format, Table 3.8	
...		3.9 Original image format, Table 3.9	
...		3.10 Display image format, Table 3.10	
		3.11 Download image format, Table 3.11	
...		3.12 Play file format, Table 3.12	
...		3.13 Extended image format, Table 3.13	
...		3.14 Outline format, Table 3.14	

Table 3.1: File format

3.2 Preview format

Type	Name	Description	Info
BYTE	PreviewImageMode	The color content for the preview image.	5.1
INT32	PreviewImageWidth	The width of the preview image.	5.2
INT32	PreviewImageHeight	The height of the preview image.	5.3
BYTE	PreviewImagePng	The image file is PNG compressed.	5.4
BYTE	PreviewImageJpeg	The image file is JPEG compressed.	5.5
BYTE	PreviewImageQuality	The quality for JPEG compression.	5.6
BYTE	PreviewImageFormat	The file format of the preview image.	5.7
INT32	PreviewImageSize	The size of the memory with the preview image in bytes.	5.8
MEMORY	PreviewImage	The memory with the preview image file.	5.9
...		3.1 File format, Table 3.1	

Table 3.2: Preview format

3.3 Symbol format

Type	Name	Description	Info
BYTE	IconImageMode	The color content of the document symbol.	6.1
INT32	IconImageWidth	The width of the symbol.	
INT32	IconImageHeight	The height of the symbol.	
INT32	IconImageSize	The memory size of the symbol file.	6.2
MEMORY	IconImage	The symbol file for the document.	6.3
...		3.1 File format, Table 3.1	

Table 3.3: Symbol format

3.4 Information format

Type	Name	Description	Info
INT32	InfoProducerLength	The number of characters of the producer name.	7.1
WCHAR[]	InfoProducer	The name of the producer or a company.	7.2
INT32	InfoInternetLength	The number of characters for an internet address.	7.3
WCHAR[]	InfoInternet	The name of the internet address.	7.4
INT32	InfoMailLength	The number of characters for an e-mail address.	7.5
WCHAR[]	InfoMail	The name of the e-mail address.	7.6
...		3.1 File format, Table 3.1	

Table 3.4: Information format

3.5 Text format

Type	Name	Description	Info
INT32	LetterImageSize	The memory size of the image file.	8.1
MEMORY	LetterImage	The image file for the characters.	8.2
BYTE	LetterUseInfo	The use of extra information. Value = 1	
...		3.6 Font format, Table 3.6	
...		3.1 File format, Table 3.1	

Table 3.5: Text format

3.6 Font format

Type	Name	Description	Info
INT32	FontCount	The number of all used fonts.	9.1
-> {	Font		
INT32	FontNameLength	The number of characters of the font name.	9.2
WCHAR[]	FontName	The name of the font.	9.3
FLOAT	FontSize	The size of the font.	9.4
BYTE	FontStyle	The styles of the font.	9.5
BYTE	FontUnit	The size unit of the font.	9.6
INT16	FontHeight	The absolute height of the characters.	9.7
INT16	FontAscent	The base height of the characters.	9.8
...		3.7 Letter format, Table 3.7	
} <-	Font		
...		3.5 Text format, Table 3.5	

Table 3.6: Font format

3.7 Letter format

Typ	Name	Beschreibung	Info
INT32	LetterCount	The number of all used characters of a font.	10.1
-> {	Letter		
WCHAR	Letter	The character as a numerical value.	10.2
DOUBLE	LetterWidth	The width to represent a character.	10.3
INT32	LetterImageAPosition	The memory location for the 1st character image.	10.4
INT32!	LetterImageAWidth	The width of the 1st character image.	10.5
INT32!	LetterImageAHeight	The height of the 1st character image.	10.6
DOUBLE!	LetterImageAX	The position of the 1st image in X coordinates.	10.6
INT32!	LetterImageAY	The position of the 1st image in Y coordinates.	10.7
MEMORY!	LetterImageValues	The memory with the values for the 2nd to 4th image.	10.8
<- {	Letter		
...		3.6 Font format, Table 3.6	

Table 3.7: Letter format

3.8 Field image format

Type	Name	Description	Info
INT32	FieldImageCount	The number of field images.	11.1
-> {	FieldImage		
BYTE	FieldImageMode	The color content of the images.	11.2
INT32	FieldImageWidth	The width of the image.	11.3
INT32	FieldImageHeight	The height of the image.	11.4
INT32	FieldImageSize	The size of the image file.	11.5
MEMORY	FieldImage	The image file for the page field.	11.6
INT32	FieldImageItemWidth	The width of a frame in an animation.	11.7
INT32	FieldImageItemCount	The number of frames in an animation.	11.8
INT32	FieldImagePathLength	The number of characters for the file path.	11.9
WCHAR[!]	FieldImagePath	The characters with the file path.	11.10
<- {	FieldImage		
...		3.1 File format, Table 3.1	

Table 3.8: Field image format

3.9 Original image format

Type	Name	Description	Info
INT32	OriginalImageCount	Number of original images for the field content.	11.1
-> {	OriginalImage		
BYTE	OriginalImageMode	The color content of the images.	11.2
INT32	OriginalImageWidth	The width of the image.	11.3
INT32	OriginalImageHeight	The height of the image.	11.4
INT32	OriginalImageSize	The size of the image file.	11.5
MEMORY	OriginalImage	The original image file within the page field.	11.6
INT32	OriginalImagePathLength	The number of characters for the file path.	11.9
WCHAR[!]	OriginalImagePath	The characters with the file path.	11.10
<- {	OriginalImage		
...		3.1 File format, Table 3.1	

Table 3.9: Original image format

3.10 Display image format

Type	Name	Description	Info
INT32	DisplayImageCount	The number of display images for the field content.	11.1
-> {	DisplayImage		
BYTE	DisplayImageMode	The color content of the images.	11.2
INT32	DisplayImageWidth	The width of the image.	11.3
INT32	DisplayImageHeight	The height of the image.	11.4
INT32	DisplayImageSize	The size of the image file.	11.5
MEMORY	DisplayImage	The display image file within the page field.	11.6
INT32	DisplayImagePathLength	The number of characters for the file path.	11.9
WCHAR[!]	DisplayImagePath	The characters with the file path.	11.10
<- {	DisplayImage		
...		3.1 File format, Table 3.1	

Table 3.10: Display image format

3.11 Download image format

Type	Name	Description	Info
INT32	DownloadImageCount	Number of download images for the field content.	11.1
-> {	DownloadImage		
BYTE	DownloadImageMode	The color content of the picture.	11.2
INT32	DownloadImageWidth	The width of the picture.	11.3
INT32	DownloadImageHeight	The height of the picture.	11.4
INT32	DownloadImageSize	The size of the image file.	11.5
MEMORY	DownloadImage	The image file of the inner page field.	11.6
INT32	DownloadImagePathLength	The number of characters with the download path.	11.9
WCHAR[!]	DownloadImagePath	The characters with the download path.	11.10
<- {	DownloadImage		
...		3.1 File format, Table 3.1	

Tabelle 3.11: Download image format

3.12 Play file format

Type	Name	Description	Info
INT32	PlayerFileCount	The number of playable files.	12.1
-> {	PlayerFile		
INT32	PlayerFileType	The file type for playing.	12.2
INT64	PlayerDuration	The playing time of the medium.	12.3
INT32	PlayerDisplayWidth	The presentation width of the medium.	12.4
INT32	PlayerDisplayHeight	The presentation height of the medium.	12.5
INT32	PlayerFileSize	The memory size for the play file.	12.6
MEMORY	PlayerFileMemory	The memory with the play file.	12.7
<- {	PlayerFile		
...		3.1 File format, Table 3.1	

Table 3.12: Play file format

3.13 Extended image format

Type	Name	Description	Info
INT32	ExpandedImageCount	The number of images for the outline extension.	11.1
-> {	ExpandedImage		
BYTE	ExpandedImageMode	The color content of the images.	11.2
INT32	ExpandedImageWidth	The width of the image.	11.3
INT32	ExpandedImageHeight	The height of the image.	11.4
INT32	ExpandedImageSize	The size of the image file.	11.5
MEMORY	ExpandedImage	The memory with the image file for the outline.	11.6
INT32	ExpandedImageItemWidth	The width of a frame in an animation.	11.7
INT32	ExpandedImageItemCount	The number of frames in an animation.	11.8
INT32	ExpandedImagePathLength	The number of characters for the file path.	11.9
WCHAR[!]	ExpandedImagePath	The characters with the file path.	11.10
<- {	ExpandedImage		
...		3.1 File format, Table 3.1	

Table 3.13: Extended image format

3.14 Outline format

Type	Name	Description	Info
INT32	OutlineCount	The number of outlines.	13.1
-> {	Outline		
UINT16	OutlineFlags	The bit values for the outline settings.	13.2
INT32[]	OutlineDistance	The distances to the representable outline.	13.3
INT32[]	OutlineFrame	The distances from the display area to the text.	13.4
INT32[]	OutlineExpandedXY	The X and Y values for the extended image.	13.5
INT32	OutlineExpandedCount	The number of partial images in the extended image.	
INT32	OutlineExpandedIndex	The zero-based index for the extended image.	13.6
INT32[]	OutlineCurveXY	The rounding of the outline.	13.7
UINT32[]	OutlineColor	The background colors of the outline.	13.8
INT32[]	OutlineShadowXY	The X and Y values for the outline shadow.	13.9
UINT32	OutlineShadowColor	The color for the outline shadow.	13.10
UINT32	OutlineBorderColor	The color for the outline border.	13.11
...		3.15 Outline text format, Table 3.15	
...!	OutlineFlags = 0x0040	3.16 Page format, Table 3.16	
INT32	OutlineChildCount	The number of child outlines.	13.12
} <-	Outline		
...		3.1 File format, Table 3.1	

Table 3.14: Outline format

3.15 Outline text format

Type	Name	Description	Info
-> {	OutlineText	Dependencies: OutlineFlags, LanguageCount	14.1
UINT32	OutlineTextColor	The color used for the outline text.	14.2
INT32	OutlineTextWidth	The width of the text representation.	
INT32	OutlineTextHeight	The height of the text representation.	
INT32	OutlineTextLength	The number of characters in the outline text.	14.3
INT32	OutlineFontIndex	The zero-based index for the outline font.	14.4
INT32	OutlineLetterIndexCount	The number of character numbers used.	14.5
INT32[]	OutlineLetterIndex	The memory with the used character numbers.	14.6
INT32	OutlineInfoTypeSize	The memory size for the character type.	14.7
BYTE[]	OutlineInfoType	The memory with the types of all characters.	14.8
INT32	OutlineInfoIndexCount	The reference value for the index memory.	
INT32!	OutlineInfoIndexSize	The memory size of the compressed index memory.	14.9
BYTE[]!	OutlineInfoIndex	The index memory with all character numbers.	14.10
INT32	OutlineTextStringLength	The number of characters in the outline text.	14.11
WCHAR[]	OutlineTextString	The characters in the outline text.	14.12
} <-	OutlineText		
...		3.14 Outline format, Table 3.14	

Table 3.15: Outline text format

3.16 Page format

Type	Name	Description	Info
INT32	PageLineCount	The number of lines in a page.	15.1
-> {	PageLine		
INT32[]	PageLineHeight	The height of a line. Dependency: LanguageCount	15.2
...		3.17 Page field format, Table 3.17	
} <-	PageLine		
...		3.14 Outline format, Table 3.14	

Table 3.16: Page format

3.17 Page field format

Type	Name	Description	Info
INT32	PageFieldCount	The number of page fields in a row.	16.1
-> {	PageField		
BYTE	PageFieldType	The field type determines the further file format.	16.2
...!	PageFieldType = 0	3.18 Empty field format, Table 3.18	
...!	PageFieldType = 1	3.19 Text field format, Table 3.19	
...!	PageFieldType = 2	3.20 Image field Format, Table 3.20	
...!	PageFieldType = 3	3.21 Player field format, Table 3.21	
...		3.22 Field setting format	
} <-	PageField		
...		3.16 Page format, Table 3.16	

Table 3.17: Page field format

3.18 Empty field format

Type	Name	Description	Info
INT32	FieldEmptyWidth	The width of the field for the display content.	17.1
INT32	FieldEmptyHeight	The height of the field for the display content.	17.2
...		3.17 Page field Format, Table 3.17	

Table 3.18: Empty field format

3.19 Text field format

Type	Name	Description	Info
-> {	FieldText	Dependencies: FieldTextFlags, LanguageCount	18.1
UINT16	FieldTextFlags	The value for the settings of the text.	18.2
INT32	FieldTextWidth	The width of the field for the display content.	18.3
INT32	FieldTextHeight	The height of the field for the display content.	18.4
INT32	FieldTextWordMax	The width of the longest word in the text.	
INT32	FieldTextColorCount	The number of colors used in the text.	18.5
UINT32[]	FieldTextColor	The colors used in the text.	18.6
INT32	FieldTextFontCount	The number of fonts used in the text.	18.7
INT32[]	FieldTextFont	The fonts used in the text.	18.8
-> {	FieldTextLetter	Dependency: FieldTextFontCount	18.9
INT32	FieldTextLetterCount	The number of character numbers used.	18.10
INT32[]	FieldTextLetter	The characters for the corresponding font.	18.11
} <-	FieldTextLetter		
INT32	FieldTextLength	The number of characters in the text.	18.12
INT32	FieldTextInfoTypeSize	The memory size for the character type.	18.13
BYTE[]	FieldTextInfoType	The memory with the types of all characters.	18.14
INT32!	FieldTextInfoFontSize	The memory size for the font index.	18.15
BYTE[]!	FieldTextInfoFont	The memory with font indices of all characters.	18.16
INT32!	FieldTextInfoColorSize	The memory size for the color index.	18.17
BYTE[]!	FieldTextInfoColor	The memory with color indices of all characters.	18.18
INT32	FieldTextIndexCount	The reference value for the index memory.	18.19
INT32!	FieldTextIndexSize	The memory size for the character index.	18.20
BYTE[]!	FieldTextIndex	The memory with all character indices.	18.21
INT32[]!	FieldTextSeparatorIndex	The separator numbers of all fonts.	18.22
} <-	FieldText		
...		3.17 Page field Format, Table 3.17	

Table 3.19: Text field format

3.20 Image field format

Type	Name	Description	Info
-> {	FieldImage	Dependencies: FieldImageFlags, LanguageCount	19.1
UINT16	FieldImageFlags	The bit values for the settings of the image.	19.2
INT32	FieldImageWidth	The width of the field for the display content.	19.3
INT32	FieldImageHeight	The height of the field for the display content.	19.4
INT32	FieldImageUrlLength	The number of characters of the path.	
WCHAR[]	FieldImageUrl	The file path or internet address for the image.	
INT32	FieldImageDisplayIndex	The zero-based index for the display image.	19.5
INT32	FieldImageOriginalIndex	The zero-based index for the original image.	19.6
BYTE	FieldImageQuality	The quality of JPEG compression.	19.7
<- {	FieldImage		
...		3.17 Page field Format, Table 3.17	

Table 3.20: Image field format

3.21 Player field format

Type	Name	Description	Info
BYTE	FieldPlayerUseImage	Determines if a preview image is included.	20.1
...!	FieldPlayerUseImage = 1	3.20 Image field format, Table 3.20	
-> {	FieldPlayer	Dependencies: FieldPlayerFlags, LanguageCount	20.2
UINT16	FieldPlayerFlags	The bit values for the settings to play.	20.3
INT32	FieldPlayerWidth	The width of the field for the display content.	20.4
INT32	FieldPlayerHeight	The height of the field for the display content.	20.5
UINT32	FieldPlayerColor	The presentation color before playing.	20.6
INT32	FieldPlayerUrlLength	The number of characters of the path.	20.7
WCHAR[]	FieldPlayerUrl	The file path or the internet address.	20.8
BYTE!	FieldPlayerType	The play format of the original file.	20.9
INT32!	FieldPlayerDisplayWidth	The display width of the original file.	20.10
INT32!	FieldPlayerDisplayHeight	The display height of the original file.	20.11
INT64!	FieldPlayerDuration	The playing time of the original file.	20.12
INT32!	FieldPlayerIndex	The zero-based index of the play file.	20.13
<- {	FieldPlayer		
...		3.17Page field Format, Table 3.17	

Table 3.21: Player field format

3.22 Field setting format

Type	Name	Description	Info
-> {	FieldSetting	Dependencies: Flags (text, ...), LanguageCount	21.1
UINT16	FieldFlags	The bit values for the page field settings.	21.2
INT32[]	FieldDistance	The distances to the display area of the field.	21.3
INT32	FieldWidth	The width of the entire field.	21.4
INT32[]	FieldCurveXY	The rounding of the displayable field.	21.5
INT32[]	FieldFrame	The distances to the content of displayable field.	21.6
INT32[]	FieldShadowXY	The position of the field shadow.	21.7
UINT32	FieldShadowColor	The color of the field shadow.	21.8
UINT32	FieldBorderColor	The border color of the displayable field.	21.9
UINT32	FieldBackColor	The background color of the displayable field.	21.10
INT32[]!	FieldImageXY	The position of the field image.	21.11
INT32!	FieldImageCount	The number of partial images.	
INT32!	FieldImageIndex	The zero-based index of the field image.	21.12
INT32!	FieldImageStartTime	The start time of the animation.	21.13
INT32!	FieldImageDisplayTime	The display time of a partial image of animation.	21.14
INT32[]	FieldImageShadowXY	The position of the shadow of a field image.	21.15
UINT32	FieldImageShadowColor	The color of the shadow of a field image.	21.16
} <-	FieldSetting		
INT32!	FieldIDLength	The number of characters of identification.	21.17
WCHAR[]!	FieldID	The characters of identification for a page field.	21.18
...!	FieldFlags = 0x0400	3.23 Various field format, Table 3.23	
...		3.17 Page field format, Table 3.17	

Table 3.22: Field setting format

3.23 Various field format

Type	Name	Description	Info
UINT16	FieldVariousFlags	The bit values for the actions of the page field.	22.1
INT8[]!	FieldVariousHoverXY	The X and Y values for highlighting the field.	22.2
INT32!	FieldVariousIDLength	The number of characters of identification.	22.3
WCHAR[]!	FieldVariousID	The characters to call the identification.	22.4
-> {	FieldVariousTip	Dependencies: FieldVariousFlags, LanguageCount	22.5
INT32!	FieldVariousTipLength	The number of characters for the speech bubble.	22.6
WCHAR[]!	FieldVariousTip	The characters for speech bubble above the field.	22.7
} <-	FieldVariousTip		
-> {	FieldVariousLink	Dependencies: FieldVariousFlags, LanguageCount	22.8
INT32!	FieldVariousLinkLength	The number of characters in the link.	22.9
WCHAR[]!	FieldVariousLink	The characters to call the link.	22.10
} <-	FieldVariousLink		
...		3.22 Field setting format, Table 3.22	

Table 3.23: Various field format

4 Information about the field format

4.1 Identification number

The identification number identifies the file format. The number can also be displayed with 4 letters (TDHW: Two Dimension Help Writer).

4.2 Number of files

The value indicates the number of files that the entire document contains. The value can not be less than 1. The program "FileViewer" can not read documents with multiple files.

Example: Test.dthw, Test.dthw.001, Test.dthw.002, usw.

4.3 File size

The value indicates the size in bytes in which the document is divided. The value can not be less than 1 megabyte (1.048.576 bytes). The document is divided into files of this size. The last file contains the rest of the document with an independent file size. In the example, a document with the size of 22MByte is divided into 10MByte.

Exapmle: Test.dthw = 10MByte, Test.dthw.001 = 10MByte, Test.dthw.002 = 2MByte

4.4 Document size

The value specifies the document size in bytes. The value can not be smaller than the total size of all project files (see 4.2 and 4.3).

4.5 File version

The file version is always 2 for this description.

4.6 Bit values

The bit values determine the further content of the file format. The bit value "UseTwoLetterLanguage" must always be set for this file format.

Name	Bit	Description
UsePreview	0x0001	The file format contains a preview image. Section 5
UseIcon	0x0002	The file format contains a document icon. Section 6
UseInfo	0x0004	The file format contains additional information. Section 7
UseTwoLetterLanguage	0x0008	The abbreviation of the country names consist of two letters.

Table 4.6: Format bits

4.7 Background color

The value specifies the background color for the document. The value is an ARGB color. It can not be less than 0xFF000000. If the value is 0, no background color is used.

See the document "HelpWriter.tdhr": Settings, Background

4.8 Window color

The value indicates the window color for the document. The value is an ARGB color. The color can only be used if it matches the background color. If the value is 0, no window color is used.

4.9 Distances to the outline structure

The distances to the outline structure consist of 4 values. The left, top, right, and bottom spaces are used to represent the outline structure. The values can not be smaller than 0 or larger than 1000 pixels.

See the document "HelpWriter.tdhr": Settings, Outline border

4.10 Distance to the page content

The distances to the page content consist of 4 values. The left, top, right, and bottom spaces are used to display the page content. The values can not be smaller than 0 or larger than 1000 pixels.

4.11 Display size

The display size for the document is specified as a factor between 1.0 to 4.0. The factor 1.0 corresponds to a 19 inch monitor with the aspect ratio 4:3 and a resolution of 1280x1024. Further information in **section 23**.

4.12 Number of languages

The value indicates the number of languages used. The document is language neutral if the value is 0. The count is used for the loop "Language" (see Table 3.1).

4.13 Number of characters for the language abbreviation

The number of characters for the abbreviation of language. The value for this file format is always 2.

4.14 Abbreviation of the language

The memory contains the characters of the abbreviation of the language. The length of the abbreviation (see section 4.13) determines the number of characters. Table 4.14 lists all languages and their abbreviations according to ISO 639-1.

	Sprache		Sprache		Sprache		Sprache
af	Afrikaans	fr	Französisch	lt	Litauisch	sr	Serbisch
ar	Arabisch	gl	Galizisch	lv	Lettisch	sv	Schwedisch
az	Aserbaidtschanisch	gu	Gujarati	mk	Mazedonisch	sw	Kiswahili
be	Belarussisch	he	Hebräisch	mn	Mongolisch	ta	Tamil
ca	Katalanisch	hi	Hindi	mr	Marathi	te	Telugu
cs	Tschechisch	hr	Kroatisch	ms	Malaiisch	th	Thailändisch
da	Dänisch	hu	Ungarisch	nl	Niederländisch	tr	Türkisch
de	Deutsch	hy	Armenisch	no	Norwegisch	tt	Tatarisch
dv	Divehi	id	Indonesisch	pa	Punjabi	uk	Ukrainisch
el	Griechisch	is	Isländisch	pl	Polnisch	ur	Urdu
en	Englisch	it	Italienisch	pt	Portugiesisch	uz	Usbekisch
es	Spanisch	ja	Japanisch	ro	Rumänisch	vi	Vietnamesisch
et	Estnisch	ka	Georgisch	ru	Russisch		
eu	Baskisch	kk	Kasachisch	sa	Sanskrit		
fa	Farsi	kn	Kannada	sk	Slowakisch		
fi	Finnisch	ko	Koreanisch	sl	Slowenisch		
fo	Färöisch	ky	Kirgisistan	sq	Albanisch		

Table 4.14: Languages according to ISO 639-1

5 Information about the preview image format

The document contains a preview image if the bit value "UsePreview" (see 4.6) is set. The preview image is created in the program "HelpWriter". By default, a PNG compressed image file is used.

See the document "HelpWriter.tdhr": Settings, Thumbnail

5.1 Color content of the preview image

The value determines the transparent color content of the image. Each pixel consists of a 32-bit value, the so-called ARGB color. The alpha value (A) indicates the permeability of the color.

Name	Value	Description
Normal	0	All alpha values are equal to 0xFF.
Transparent	1	The alpha value can be 0x00 or 0xFF.
Alpha	2	The alpha value can contain all numbers (0x00 to 0xFF).

Table 5.1: Color mode

5.2 Image width

The width of the preview image in pixels. The value can not be less than 1 or more than 16,000.

5.3 Image height

The height of the preview image in pixels. The value can not be less than 1 or more than 16,000.

5.4 PNG compression

If the value is 1, the preview image PNG can be compressed. At 0, the image is not created with PNG compression. The value is only for the program "HelpWriter".

5.5 JPEG compression

If the value is 1, the preview image JPEG can be compressed. If 0, the image will not be created using JPEG compression. The value is only for the program "HelpWriter".

5.6 Quality

The value determines the quality of the JPEG compressed image file when it is created. The number can not be less than 20 or greater than 100. The value is only for the program "HelpWriter".

5.7 Image format

The value specifies the file format for the following image memory (see section 5.9).

Name	Value	Description
Unknown	0	An unknown or no image format.
bmp	1	An uncompressed picture (Windows Bitmap).
emf	2	A vector based image (Windows Enhanced Metafile).
exif	3	An image file format (Exchangeable Image File Format).
gif	4	A lossless compressed image (Graphics Interchange Format).
icon	5	An uncompressed small picture (Windows Icon).
jpeg	6	A lossy compressed image (Joint Photographic Experts G).
png	7	A lossless compressed image (Portable Network Graphics).
tiff	8	A lossless compressed image (Tagged Image File Format).
wmf	9	A vector based image (Windows Metafile).
tpd	10	An uncompressed picture (2D picture). Create by "PicturePaint"

Table 6.1: Image format

5.8 Memory size

The value specifies the file size of the preview image in bytes. The value can not be less than 1.

5.9 Image memory

The memory contains the preview file that was created for the document. For the size see 5.8.

6 Information about the Symbol format

The document contains an icon if the bit value "Uselcon" (see 4.6) is set. The image is displayed in the window frame on the top left. The maximum dimension is 120 x 30 pixels (pixels).

See the document "[HelpWriter.tdhr](#)": Settings, Producer

6.1 Color content of the symbol image

The value determines the transparent color content of the image. Each pixel consists of a 32-bit value, the so-called ARGB color. The alpha value (A) indicates the permeability of the color. See table 5.1 Color mode.

6.2 Memory size

The value indicates the file size of the symbol image in bytes. The value can not be less than 1.

6.3 Image memory

The memory contains the image file that was created for the document. For the size see 6.2.

7 Discription about the information format

The document contains additional information if the bit value "UseInfo" (see 4.6) is set.

See the document "HelpWriter.tdhr": Settings, Producer

7.1 Length of the producer name

The value indicates the number of characters for the manufacturer name. The name is not included if the number is -1 or 0. The value can not be greater than 1000.

```
if(FieldImageUrlLength == -1) return null; //Use the value -1
if(FieldImageUrlLength == 0) return String.Empty;
```

7.2 Producer name

The name consists of a certain number of characters (letters). The name length (see section 7.1) determines the number of characters. A character is a 16 bit unsigned value. The memory size for the name results from the name length times 2 bytes.

Memory size: InfoProducerLength * 2Bytes (16Bit)

7.3 Length of the internet address

The value indicates the number of characters for the internet address. The address is not included if the number is -1 or 0. The value can not be greater than 1000.

7.4 Internet address

The address consists of a certain number of characters (letters). The length (see 7.3) determines the number of characters.

7.5 Length of the e-mail address

The value indicates the number of characters for the e-mail address. The address is not included if the number is -1 or 0. The value can not be greater than 1000.

7.6 E-mail address

The address consists of a certain number of characters (letters). The length (see 7.5) determines the number of characters.

8 Information about the text format

All characters are present in an image file. The image is PNG compressed and has 32Bit ARGB color values. The alpha value will not be used here. The illustrated letters (characters) are black on a white background.

8.1 Memory size

The value indicates the memory size for the text image in bytes. The value **can not be less than 1**.

8.2 Image memory

The memory contains the image file with the characters used. The size is given in section 8.1.

9 Information about the font format

9.1 Number of fonts

The value indicates the number of fonts used. It can not be less than 0 or greater than 10,000. The number is used for the loop "Font" (see Table 3.6).

9.2 Name length

The value indicates the number of characters for the font name. It can not be less than 1 or greater than 200.

9.3 Name

The font name consists of a certain number of characters (letters). The name length (see section 9.2) determines the number of characters. A character is a 16 bit unsigned value. The memory size for the name results from the length times 2 bytes.

Memory size: `FontNameLength * 2Bytes (16Bit)`

9.4 Font size

The font size is specified as a floating-point number. For the program "HelpWriter" the value without decimal places and with the size unit "Pixel" (see 9.6) is specified.

9.5 Font styles

The value determine the style of the font. The font styles are bit values and can be combined.

Name	Bit	Description
Regular	0x00	If the value is 0, the text is drawn without any further styles.
Bold	0x01	The text is displayed in bold. The strength is 700.
Italic	0x02	The text is drawn in italics.
Underline	0x04	The text is underlined.
Strikeout	0x08	The text is strike out.

Table 9.5: Font styles

9.6 Size unit

Based on the size unit, the font size (see 9.4) can be determined. In the program "HelpWriter" only the value 2 "Pixel" is used.

Name	Value	Description
World	0	The font size is given in global coordinates.
Display	1	The font size is specified in the unit of the display device.
Pixel	2	The font size is specified in pixels.
Point	3	The font size is specified in a printer point (1/72 inch).
Inch	4	The font size is given in inches.
Document	5	The font size is specified in a document unit (1/300 inch).
Millimeter	6	The font size is given in millimeters.

Table 9.6: Size unit

10 Information about the letter format

All letters use 4 character images, which consist of a memory position, width, height and the display coordinates.

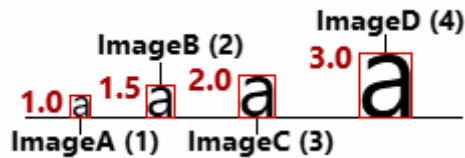


Figure 10a: Character image sizes

The 1st character image (see 10.4 to 10.8) is used at a display factor of 1.0 to 1.25. The second character image (see 10.9) at a factor of 1.25 to 1.75, the third image from 1.75 to 2.5 and the 4th image from 2.5 to 4.0. For more information, see section 4.11 about the document size.

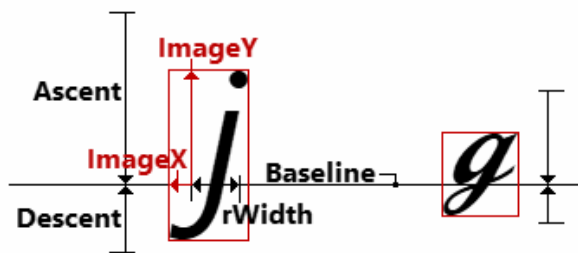


Figure 10b: Character image display

The values "Ascent" and "Descent" are given by the font and determine the baseline "Baseline". The width "rWidth" is the distance of the letters to each other. The character image is drawn using the negative or positive coordinates "ImageX" and "ImageY" at the beginning of each letter.

10.1 Number of characters

The value indicates the number of used characters (letters) for the corresponding font. It can not be less than 1 or greater 65536.

10.2 Characters

The character is specified as a 16-bit value.

10.3 Character width

The width of a letter is determined with the help of the square size of a font and adjusted based on the actual font size. The value can not be less than 0. For the "Carriage Return" (0x000D) and "New Line" (0x000A) control characters, the width is 0.

10.4 Memory position

The memory position is specified in bytes and refers to the character image (see 8.2). The value can not be less than -1. If the value is -1, the drawing image is not used and the image width (see 10.5), image height (see 10.6), image position in X and Y coordinates (see 10.7 and 10.8) and the character image values (see 10.9) are not available in the character format. The two control characters "Carriage Return" (0x000D) and "New Line" (0x000A), as well as the space have no image memory. To extract and display the pixels of the character, see the program examples in 10.10.

10.5 Image width

The value specifies the width of a character in pixels. It can not be less than 1. The image width is not available in the format if the memory position (see 10.4) contains the value -1.

10.6 Image height

The value indicates the height of a character in pixels. It can not be less than 1. The image height does not exist in the format if the memory position (see 10.4) contains the value -1.

10.7 Image position in x coordinates

The character image is drawn in negative or positive X coordinate from the beginning of the letter. If the position is to the left of the beginning, the value is negative. A positive value is to the right of it. This value is a floating-point number, like the width (10.3). It is not expected to be less than -2048 or greater than +2048. The value does not exist if the memory position (see 10.4) contains the value -1.

10.8 Image position in y coordinates

The character image is drawn in negative or positive Y-coordinate from the baseline. If the position is above the line, the value is negative. A positive value is below it. The value is given as an integer. It is not expected to be less than -2048 or greater than +2048. The value does not exist if the memory position (see 10.4) contains the value -1.

10.9 Character image values

The memory consists of 3 more character images. The values in Table 10.9 define an enlarged character image. The second image is 1.5 times larger than the first one. The third image is twice as large and the fourth is three times the size of the first image (see 10.4 to 10.8). All other character images are not available in the format if the memory position (see 10.4) contains the value -1.

Typ	Name	Description	Info
INT32	LetterImagePosition	The memory location for the character image.	10.4
INT32	LetterImageWidth	The width of the character image.	10.5
INT32	LetterImageHeight	The height of the character image.	10.6
DOUBLE	LetterImageX	The position of the character image in X coordinates.	10.7
INT32	LetterImageY	The position of the character image in Y coordinates.	10.8

Table 10.9: Character values

10.10 Program examples

In program 10.10.1, the pixels for a character (letter) are copied from the character image (see 8.2). The character image is passed as "Image", the memory position (10.4) as "Pos", the image width (10.5) as "Width" and the height (10.6) as "Height" of the function.

```
public Byte[] LetterMemory(Bitmap Image, Int32 Pos, Int32 Width, Int32 Height) {
    //System.Drawing.Bitmap, System.Drawing.Imaging.BitmapData
    //System.Runtime.InteropServices.Marshal

    Int32 Size = Width * Height * 4;
    Byte[] Memory = new Byte[Size];

    BitmapData Data = Image.LockBits(new Rectangle(0, 0, Image.Width, Image.Height),
        ImageLockMode.ReadOnly, PixelFormat.Format32bppArgb);

    Marshal.Copy(new IntPtr(Data.Scan0.ToInt64() + Pos), Memory, 0, Size);

    Image.UnlockBits(Data);
    return Memory;
}
```

Program 10.10.1: Character memory

Program 10.10.2 shows how to combine a black letter on a white background with a text color. The function is given the color of the background as "BackImage", the color of the character image (8.2) as "Letter" and the new text color as "Color".

```
public Color LetterColor(Color BackImage, Color Letter, Color Color) {  
    //System.Drawing.Color  
  
    if(Letter.R == 0 && Letter.G == 0 && Letter.B == 0)  
        return Color;  
  
    if(Letter.R == 255 && Letter.G == 255 && Letter.B == 255)  
        return BackImage;  
  
    Int32 Red = (Letter.R * BackImage.R + (255 - Letter.R) * Color.R) / 255;  
    Int32 Green = (Letter.G * BackImage.G + (255 - Letter.G) * Color.G) / 255;  
    Int32 Blue = (Letter.B * BackImage.B + (255 - Letter.B) * Color.B) / 255;  
    return Color.FromArgb(Red, Green, Blue);  
}
```

Program 10.10.2: Text color

11 Information about the field image format

The field image (see 3.8) is also used as a foreground or background in a page field. It can also be displayed animated.

See the document "HelpWriter.tdhr": Page, Settings, Picture

The display image (see 3.10) is drawn as content in a page field. The original image (see 3.9) will only be saved if the format (PNG or JPEG) of the image has been changed.

See the document "HelpWriter.tdhr": Page, Image

The download image (see 3.11) is drawn as content in a page field.

See the document "HelpWriter.tdhr": Page, Image

The expanded image (see 3.13) is displayed if an outline has child elements (outlines).

See the document "HelpWriter.tdhr": Outline, Expanded

11.1 Number of images

The value indicates the number of existing images. It can not be less than 0. The loops "FieldImage", "OriginalImage", "DisplayImage", "DownloadImage" and "ExpandedImage" use the value as the number of repetitions. If the value is 0, the corresponding image format is not available. In the following formats, the images are assigned via a zero-based index.

11.2 Color content

The value (see Table 5.1) determines the transparent color content of the image. Each pixel consists of a 32-bit value, the so-called ARGB color. The alpha value (A) indicates the permeability of the color.

11.3 Image width

The value specifies the width of the image in pixels. It can not be less than 1 or more than 32,000.

11.4 Image height

The value specifies the height of the image in pixels. It can not be less than 1 or more than 32,000.

11.5 Memory size

The value is specified in bytes and determines the size of the image file (see 11.6). It can not be less than 1.

11.6 Image file

The memory contains the image file. For the file size see 11.5.

11.7 Frame width

For an animation, the image is divided into sections of equal width. The height of a partial image corresponds to the image height (11.4). If the number of partial images is equal to 1 (see 11.8), the entire image width is specified. The value can not be less than 1 or greater than 32,000.

11.8 Number of frames

If the image is used in an animation, the number of frames must be specified. If this value is equal to 1, the field width (see 11.7) must correspond to the value of the entire image width (11.3). The number can not be less than 1 or more than 32,000.

11.9 Number of characters for the file path

The value indicates the number of characters for the file path. The path is not included if the number is -1 or 0. The file path is not used in the original image format (3.9) of the "HelpWriter" program. The value can not be greater than 32,000.

```
if(ImagePathLength == -1) return null; //Use the value -1
if(ImagePathLength == 0) return String.Empty;
```

11.10 Characters of the file path

The path consists of a certain number of characters (letters). The file path length (see section 11.9) determines the number of characters. A character is a 16 bit unsigned value. The memory size for the file path results from the path length times 2 bytes.

Memory size: ImagePathLength * 2Bytes (16Bit)

In download image format (3.11) an internet address is given here. The path to an image file is saved in the display image format (3.10) instead of the original image format (3.9).

12 Information about the play file format

The play file is displayed inside a page field. It can be a video, song or animation.

See the document "[HelpWriter.tdhr](#)": Page, Player

12.1 Number of files

The value indicates the number of existing files. It can not be less than 0. The loop "PlayerFile" uses the value as the number of repetitions. If the value is 0, the next file format does not exist. In the play field format (see section 21), the files are mapped using a zero-based index (see 21.13).

12.2 File type

The value determines the file type (see 12.7).

Name	Value	Description
Sound	0	The file is an audio file.
SoundImage	1	The file is an audio file with a picture that can be displayed.
Video	2	The file is a video <u>without</u> sound.
VideoAudio	3	The file is a video <u>with</u> sound.
Gif	4	The file is a GIF animation.
TDAnimation	5	The file is an animation (with sound). Created: "PicturePaint"

Table 12.2: File type

12.3 Playing time

The value indicates the playing time for the file. It can not be less than 1.

Playing time: `PlayerDuration * 100ns` (Nanosekunden)

12.4 Display width

The value determines the original display width in pixels. It can not be less than 0 or greater than 16,000. For the file type "Sound" (see 12.2) the value is 0.

12.5 Display height

The value determines the original display height in pixels. It can not be less than 0 or greater than 16,000. For the file type "Sound" (see 12.2) the value is 0.

12.6 Memory size

The value is specified in bytes and determines the size of the file (see 12.7). It can not be less than 1.

12.7 File memory

The memory contains the playable file. For the file size see 12.6.

13 Information about the outline format

13.1 Number of outlines

The value indicates the number of existing outlines. It can not be less than 1. The loop "Outline" uses the value as the number of repetitions. If the number of child outlines (see 13.12) is greater than 0, this value can be added.

13.2 Setting bits

The setting bits are used in the program "HelpWriter". Only the value "UseLanguage" affects the file format. In the outline text format (see section 3.15) the number of the loop "OutlineText" is determined on the basis of this bit.

Name	Bit	Description
UseRound	0x0001	The outline field is drawn rounded.
UseShadow	0x0002	The outline field has a shadow.
UseBorder	0x0004	The outline field is displayed with a border color.
UseBackground	0x0008	The outline field has a background color.
UseBackgroundStyle	0x0010	The outline field is drawn with a color gradient.
UseLanguage	0x0020	The outline text can be displayed in multiple languages.
UsePage	0x0040	The outline has one page.

Table 13.2: Setting bits

13.3 Distances

The set consists of 4 values. The left, top, right and bottom distances determine the position of the outline field. The values can not be less than 0 or greater than 10,000 pixels.

See the document "[HelpWriter.tdhr](#)": Outline, Distance

13.4 Frame

The set consists of 4 values. The left, top, right, and bottom margins of the outline field for text representation. The values can not be smaller than 0 or larger than 1000 pixels.

See the document "[HelpWriter.tdhr](#)": Outline, Frame

13.5 Position of the expanded image

The set consists of 2 values. The X and Y coordinates indicate the position of the expanded image. The values can not be less than 0 or greater than 10,000 pixels.

See the document "[HelpWriter.tdhr](#)": Outline, Expanded

13.6 Index of the expanded image

The value indicates the zero-based index for the expanded image (see 3.13). It can not be smaller than 0 or larger and equal to the number of existing images (see 11.1).

13.7 Curve

The set consists of 2 values. The X and Y sizes indicate the curves in the corners of the outline field. The values can not be smaller than 0 or larger than 100 pixels. The method "DrawEllipseWidth" (see 13.13) creates the rounding for a rounded rectangle. The value "OutlineTextWidth" is determined by the character width "rWidth" (see section 10, figure 10b) of the letters. The height "OutlineTextHeight" by the font values "Ascent" + "Descent". The two values must be determined by the square size of the font (see section 23.4, "EmAscent" and "EmDescent" values).

```
Int32 PosX = OutlineDistanceTop;  
Int32 PosY = OutlineDistanceLeft;  
Int32 Width = OutlineFrameLeft + OutlineFrameRigth + OutlineTextWidth;  
Int32 Height = OutlineFrameTop + OutlineFrameBottom + OutlineTextHeight;  
UInt32 Color = OutlineBorderColor;
```

```
DrawEllipseWidth(PosX, PosY, Width, Height, Int32 RoundX, Int32 RoundY, UInt Color)
```

See the document "HelpWriter.tdhr": Outline, Curve

13.8 Background color

The set consists of 3 values. The middle, beginning and end colors are ARGB colors. They can not be less than 0xFF000000. Only the middle color is used as the background color. If the setting bit "UseBackgroundStyle" (see 13.2) is set, a color gradient is drawn. The method "CreateRoundColor" (see 13.14.1) creates all the colors for the gradient.

```
Int32 Count = OutlineFrameTop + OutlineFrameBottom + OutlineTextHeight;
```

```
CreateRoundColor(Count, 1.0, Color Begin, Color Middle, Color End)
```

See the document "HelpWriter.tdhr": Outline, Background

13.9 Shadow position

The set consists of 2 values. The X and Y coordinates indicate the position of the shadow. The values can not be smaller than 0 or larger than 1000 pixels.

See the document "HelpWriter.tdhr": Outline, Shadow

13.10 Shadow color

The value specifies the ARGB color for the shadow. It can not be less than 0xFF000000.

13.11 Border color

The value indicates the ARGB color for the border. It can not be less than 0xFF000000.

See the document "HelpWriter.tdhr": Outline, Border

13.12 Number of child outlines

The value indicates the number of child outlines. It can not be less than 0. The value can be added to the number (see 13.1) of the loop "Outline".

13.13 Rounding

The C++ method shows an incomplete program excerpt for creating a rounding. The method is used when the value "RoundX" is greater than or equal to "RoundY".

```
void DrawEllipseWidth(__int32 PosX, __int32 PosY, __int32 Width, __int32 Height,
                     __int32 RoundX, __int32 RoundY, UINT Color)
{
    double dA = 1.0 / (RoundX * RoundX);
    double dB = 1.0 / (RoundY * RoundY);

    __int32 x = RoundX, y = 0, Xd, Yd;

    __int32 Xp = PosX + Width - RoundX - 1; Xn = PosX + RoundX;
    __int32 Yp = PosY + Height - RoundY - 1; Yn = PosY + RoundY;

    double dY = (y + 1.0) * (y + 1.0) * dB;
    double dX = (x - 0.5) * (x - 0.5) * dA;
    double vY, vX;

    while(dX + dY <= 1.0) {
        y++;
        dY = y * y * dB;

        if(dX + dY > 1.0) {
            x--;
            dX = (x - 0.5) * (x - 0.5) * dA;
        }

        Yd = Yp + y; Xd = Xp + x;
        pMem[Xd + Yd * MemWidth] = Color;

        Xd = Xn - x;
        pMem[Xd + Yd * MemWidth] = Color;

        Yd = Yn - y; Xd = Xp + x;
        pMem[Xd + Yd * MemWidth] = Color;

        Xd = Xn - x;
        pMem[Xd + Yd * MemWidth] = Color;
    }

    dY = (y + 0.5) * (y + 0.5) * dB;

    while(x > 1) {
        x--;
        dX = x * x * dA;

        if(dX + dY < 1.0) {
            y++;
            dY = (y + 0.5) * (y + 0.5) * dB;
        }

        Yd = Yp + y; Xd = Xp + x;
        pMem[Xd + Yd * MemWidth] = Color;

        Xd = Xn - x;
        pMem[Xd + Yd * MemWidth] = Color;

        Yd = Yn - y; Xd = Xp + x;
        pMem[Xd + Yd * MemWidth] = Color;

        Xd = Xn - x;
        pMem[Xd + Yd * MemWidth] = Color;
    }
}
```

Program 13.13: Rounding

13.14 Color gradient

The method creates all colors for a round gradient.

```
public UInt32[] CreateRoundColor(Int32 Count, Double Factor, Color Begin,
                                Color Middle, Color End) {
    if(Count < 1) return new UInt32[0];

    UInt32[] ColorArray = new UInt32[Count];

    if(Count < 4) {
        if(Count == 1) {
            ColorArray[0] = (UInt32) Middle.ToArgb();
            return ColorArray;
        }

        if(Count == 2) {
            ColorArray[0] = (UInt32) Middle.ToArgb();
            ColorArray[1] = (UInt32) End.ToArgb();
            return ColorArray;
        }

        ColorArray[0] = (UInt32) Begin.ToArgb();
        ColorArray[1] = (UInt32) Middle.ToArgb();
        ColorArray[2] = (UInt32) End.ToArgb();
        return ColorArray;
    }

    Int32 SizeA = Count / 2;
    Int32 SizeB = Count - SizeA;

    this.CreateSineColor(ColorArray, 0, SizeA, Factor, Begin, Middle);
    this.CreateCosineColor(ColorArray, SizeA, SizeB, Factor, Middle, End);
    return ColorArray;
}
```

Program 13.14.1: Color gradient

The method creates all colors for a round gradient from begin to middle.

```
public void CreateSineColor(UInt32[] ColorArray, Int32 Index, Int32 Count,
                            Double Factor, Color Begin, Color End) {
    if(ColorArray.Length == 1) {
        ColorArray[0] = (UInt32) Begin.ToArgb();
        return;
    }

    double A = End.A - Begin.A;
    double R = End.R - Begin.R;
    double G = End.G - Begin.G;
    double B = End.B - Begin.B;

    double dCount = (Count - 1) * (Count - 1);

    for(Int32 i = 0; i < Count; i++) {
        double Value = Math.Pow(1.0 - i * i / dCount, Factor);

        ColorArray[Index + Count - 1 - i] =
            (UInt32) Color.FromArgb(Convert.ToInt32(Begin.A + Value * A),
                                    Convert.ToInt32(Begin.R + Value * R),
                                    Convert.ToInt32(Begin.G + Value * G),
                                    Convert.ToInt32(Begin.B + Value * B)).ToArgb();
    }
}
```

Program 13.14.2: Sine colors

The method creates all colors for a round gradient from middle to end.

```
public void CreateCosineColor(UInt32[] ColorArray, Int32 Index, Int32 Count,
                             Double Factor, Color Begin, Color End) {
    if(ColorArray.Length == 1) {
        ColorArray[0] = (UInt32) Begin.ToArgb();
        return;
    }

    double A = End.A - Begin.A;
    double R = End.R - Begin.R;
    double G = End.G - Begin.G;
    double B = End.B - Begin.B;

    double dCount = (Count - 1) * (Count - 1);

    for(Int32 i = 0; i < Count; i++) {
        double Value = Math.Pow(1.0 - i * i / dCount, Factor);

        ColorArray[Index + i] = (UInt32) Color.FromArgb(
            Convert.ToInt32(End.A - Value * A),
            Convert.ToInt32(End.R - Value * R),
            Convert.ToInt32(End.G - Value * G),
            Convert.ToInt32(End.B - Value * B)).ToArgb();
    }
}
```

Program 13.14.3: Cosine colors

14 Information about the outline text format

14.1 Number of repetitions

The number of repetitions of the loop "OutlineText" depends on the setting bit "UseLanguage" (see 13.2). If the bit is set, the outline text format (see 3.15) is repeated for each installed language (see 4.12). If the document is language-neutral, the format is read only once.

14.2 Text color

The value indicates the ARGB text color. It can not be less than 0xFF000000.

14.3 Text length

The value determines the number of characters for the outline text. It can not be less than 1 or greater than 1000.

14.4 Font index

The zero-based index of the font, which was read in format 3.6. The value can not be less than 0 or greater and equal to the font count (see 9.1).

14.5 Number of characters

The value specifies the number of zero-based indexes for the characters read in format 3.7. The value can not be smaller than 1 or greater than the number of characters (see 10.1).

14.6 Character indices

The set contains all indices for the characters used in the outline text. An index can not be less than 0 or greater and equal to the number of characters (see 10.1). It can only happen once in the set. The corresponding character set is determined by the font index (see 14.4).

14.7 Size of memory for the character information

The value indicates the size of the information memory in bytes. The value can not be less than 1 or greater than the number of characters (see section 14.5) in the text.

14.8 Information memory

The information memory contains a 2Bit value for each character (see section 14.6). The memory can contain the values 0 to 3 (see table 14.8). For conversion to a byte memory see program example 14.13.

```
Int32 LetterLength = OutlineTextLength;
Int32 ValueMax = 4;

Byte[] ValueArray = OutlineTextInfoType; //Input memory
```

Each letter contains the value 0, only the space is specified with the value 2 (Space). All other values do not exist in a text line.

Name	Value	Description
Letter	0	A character without additional information.
Separator	1	The word can be shared with a delimiter.
Space	2	The character is a space.
Control	3	The special character is specified for a line break.
NewLine		The set bit has been removed.

Table 14.8: Character information

14.9 Memory size for the character indices

The value indicates the size of the index memory in bytes. The value will not be used if the number of characters (see 14.5) is 1 and only one character is used in the outline text.

14.10 Memory width the character indices

The size of the index memory is given in section 14.9. The memory is not available if the number of characters (see 14.5) is 1. The memory is bit compressed and contains the zero based indices for the used character numbers (see 14.6). An index refers to the set of character numbers (indices). In program example 14.13, the index memory is decompressed if the reference value is less than or equal to 256. If more than 256 characters are used, the result memory "ResultArray" must be defined with 16-bit values.

```
Int32 LetterLength = OutlineTextLength;
Int32 ValueMax = OutlineLetterIndexCount;

Byte[] ValueArray = OutlineInfoIndex;
```

14.11 Text length

The value indicates the number of characters for the outline text. It can not be less than 1 or greater than 1000. The value is identical to the text length (see 14.3).

14.12 Outline text

The text consists of a certain number of characters (letters). The text length (see 14.11) determines the number of characters. A character is a 16 bit unsigned value. The memory size for the text results from the text length times 2 bytes.

Memory size: OutlineTextStringLength * 2Bytes (16Bit)

14.13 Sample program

```
Int32 LetterLength;
Int32 ValueMax;

Byte[] ValueArray; //Input memory
Byte[] ResultArray = new Byte[LetterLength]; //Output memory

Int32 BitCountMax = (Int32) Math.Ceiling(Math.Log(ValueMax, 2)); //Bits
Int32 BitCount = 0;
Int32 Index = 0;

for(Int32 i = 0; i < LetterLength; i++) {
    Byte Value = ValueArray[Index];

    Value <= BitCount;
    BitCount += BitCountMax;

    if(BitCount >= 8) {
        if(BitCount == 8) {
            BitCount = 0;

            Value >>= 8 - BitCountMax;

            Index++;
        } else {
            BitCount -= 8;

            Byte ValueNext = ValueArray[++Index];
            ValueNext >>= 8 - BitCount;

            Value >>= 8 - BitCountMax;
            Value |= ValueNext;
        }
    } else {
        Value >>= 8 - BitCountMax;
    }

    ResultArray [i] = Value;
}
```

Program 14.13: Decompression

15 Information about the page format

The outline has one page if the setting bit "UsePage" (see 13.2) is present.

15.1 Number of lines

The value indicates the number of lines in a page. It can not be less than 1 or greater than 1000. The number is used to repeat the loop "PageLine".

15.2 Line height

The number of values in the set is determined by the installed languages (see 4.12). If the document is language-neutral, only one line height is specified. A height can not be less than 1 or greater than 200,000 pixels.

16 Information about the page field format

16.1 Number of fields

The value indicates the number of fields in a line. It can not be less than 0 or greater than 1000. The number is used to repeat the loop "PageField".

16.2 Field type

The field type determines the further file format.

Name	Value	Description
Empty	0	The field is displayed empty. See section 17
Text	1	The field is displayed with a text. See section 18
Image	2	The field is displayed with an image. See section 19
Player	3	The field can play a video, music or animation file. See section 20

Table 16.2: Field type

17 Information about the empty field format

17.1 Field width

The value indicates the width of the field. It can not be smaller than 1 or larger than [200,000 pixels](#).

17.2 Field height

The value indicates the height of the field. It can not be smaller than 1 or larger than [200,000 pixels](#).

18 Information about the text field format

18.1 Number of repetitions

The number of repetitions of the loop "FieldText" depends on the setting bit "UseLanguage" (see 18.2). If the bit is set, the text field format (see 3.19) is repeated for each installed language (see 4.12). If the document is language-neutral, the format is read only once.

18.2 Settings

The settings are used in the "HelpWriter" program. Only the values "UseLanguage" and "UseSeparator" affect the file format. In the text field format (see 18.1) the number of the loop "FieldText" (see 3.19) is determined by the bit "UseLanguage".

Name	Value	Description
Alignment_Left	0x0001	The text is displayed on the left side.
Alignment_Right	0x0002	The text is displayed on the right side.
Alignment_Center	0x0003	The text is displayed in the middle.
Alignment_Justified	0x0004	The text is displayed in justification.
	Bit	
UseLanguage	0x0010	The field text can be displayed in multiple languages.
UseSizeable	0x0020	The page field can change its size.
UseSeparator	0x0040	Separators can be used in the field text.

Table 18.2: Settings

18.3 Field width

The value indicates the width of the field contents. It can not be smaller than 1 or larger than [100,000 pixels](#). The absolute field width is given by the width (see 22.4) if the "UseSizeable" bit (see 18.2) has been set.

18.4 Field height

The value indicates the height of the field content. It can not be smaller than 1 or larger than [100,000 pixels](#). The absolute field height is specified by the text lines depending on the text width. The determination of the font height is described in section 23.3.

18.5 Number of colors

The value indicates the number of colors used. It can not be less than 1 or greater than 256.

18.6 Text colors

The set contains all the used ARGB colors of the text. The number of the set is determined by the number of colors (see 18.5). A color value can not be less than 0xFF000000. See the example in section 18.23.

18.7 Number of fonts

The value specifies the number of zero-based indices for the fonts that were read in the 3.6 format. The value can not be less than 1 or greater than 256.

18.8 Font indices

The set contains all indices for the fonts used in the field text. An index can not be less than 0 or greater and equal to the font count (see 9.1). It can only happen once in the set. See the example in section 18.23.

18.9 Number of repetitions

The number of fonts (see 18.8) determines the repetitions of the loop "FieldTextLetter". For each font used, a set of character numbers (indices) is given.

18.10 Number of characters

The value specifies the number of zero-based indices for the characters read in format 3.7. The value can not be smaller than 1 or greater than the number of characters (see 10.1).

18.11 Character indices

The set contains all indices for the characters used in the field text. An index can not be less than 0 or greater and equal to the number of characters (see 10.1). It can only happen once in the set. The corresponding amount of characters is determined by the font index (see 18.8). See the example in section 18.23.

18.12 Text length

The value determines the number of characters for the text field. It can not be less than 1.

18.13 Memory size for the character information

The value indicates the size of the information memory in bytes. The value can not be less than 1 or greater than the number of characters (see section 18.12) in the text.

18.14 Information memory

The information memory contains a 2Bit value for each character (see 18.12). The memory can contain the values 0 to 3 (see table 18.14). For conversion to a byte memory see program example 14.13.

```
Int32 LetterLength = FieldTextLength;  
Int32 ValueMax = 4;  
  
Byte[] ValueArray = FieldTextInfoType; //Input memory
```

A word that can be split contains the value 1 (Separator) at the separation point. In addition, after the letter, a separator appears at the end of a line of text (see 18.22). For a space, the value 2 (Space) is specified. In the case of a line break, the character "Carriage Return" (0x0D) is specified at the end of a text line and the character "New Line" (0x0A) at the beginning of the next line. Both special characters have the value 3 (Control) in the information memory.

Name	Value	Description
Letter	0	A character without additional information.
Separator	1	The word can be shared with a delimiter.
Space	2	The character is a space.
Control	3	The special character is specified for a line break.
NewLine		The set bit has been removed.

Table 18.14: Character information

18.15 Memory size for the font indices

The value indicates the size of the memory for the font indices. It can not be less than 1. If only one font is used in the text, this value does not exist in the format.

18.16 Memory with the font indices

The memory contains a bit-oriented font index for each character. The index is derived from the read order of the font indices (see 18.8). If only one font is used in the text, this memory is not present in the format. For decompression in byte values see program example 14.13. See also the example in section 18.23.

```
Int32 LetterLength = FieldTextLength;  
Int32 ValueMax = FieldTextFontCount;  
  
Byte[] ValueArray = FieldTextInfoFont; //Input memory
```

18.17 Memory size for the color indices

The value indicates the size of the memory for the color indices. It can not be less than 1. If only one color is used in the text, this value does not exist in the format.

18.18 Memory with the color indices

The memory contains a bit-oriented color index for each character. The index results from the read sequence of the text colors used (see 18.6). If only one color is used in the text, this memory does not exist in the format. For decompression in byte values see program example 14.13. See also the example in section 18.23.

```
Int32 LetterLength = FieldTextLength;  
Int32 ValueMax = FieldTextColorCount;  
  
Byte[] ValueArray = FieldTextInfoColor; //Input memory
```

18.19 Reference value for the character indices

The value is used as the reference for the compressed index memory (see 18.21). It can not be less than 1.

18.20 Memory size for the character indices

The value indicates the size of the memory for the character indices. It can not be less than 1. The value does not exist in the format if the reference value (see 18.19) is not greater than 1.

18.21 memory with the character indices

The memory contains a bit-oriented index for each character. The index results from the read order of the used character indices (see 18.11) for the corresponding font. If only one character per font is used in the text, that memory does not exist in the format. Accordingly, the reference value (18.19) is equal to 1. For decompression in byte values see program example 14.13. If more than 256 characters are used for a font, the result memory "ResultArray" must be defined with 16-bit values. See also the example in section 18.23.

```
Int32 LetterLength = FieldTextLength;  
Int32 ValueMax = FieldTextIndexCount; //See section 18.19  
  
Byte[] ValueArray = FieldTextIndex; //Input memory
```

18.22 Seperator

If the setting bit "UseSeparator" (see 18.2) is set, an index for a delimiter (see section 10) is specified for each font used.

18.23 Example

Using the example (see 18.23) from the program "HelpWriter" to show how the different sets and memory are defined.

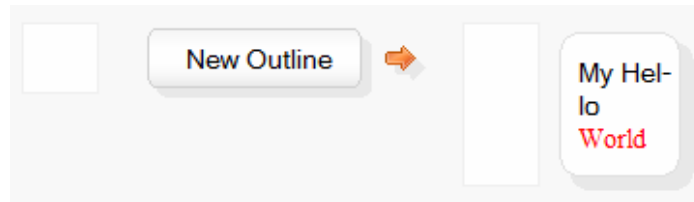


Figure 18.23: Field text

Text colors (siehe 18.6):

```
UInt32[] = {0xFF000000,0xFFFF0000} (Black, Red)
```

Font indices (siehe 18.8):

```
Int32[] = {2,5} (Microsoft Sans Serif, Times New Roman)
```

Character indices (siehe 18.11):

```
Int32[] = {10,11,0,12,15,3,5,13,16} (0x000A,0x000D, ,H,M,e,l,o,y) //M. Sans Serif
Int32[] = {15,16,17,18,19} (W,d,l,o,r) //Times New Roman
```

Character types (siehe 18.14):

```
Byte[] = {0,0,2,0,0,1,0,0,3,3,0,0,0,0,0} (L,L,SP,L,L,L/SE,L,L,CT,CT,L,L,L,L,L)
```

Font indices (siehe 18.16):

```
Byte[] = {0,0,0,0,0,0,0,0,0,0,0,1,1,1,1,1} //M. Sans Serif (0), Times New Roman (1)
```

Color indices (siehe 18.18):

```
Byte[] = {0,0,0,0,0,0,0,0,0,0,1,1,1,1,1} //Black (0), Red (1)
```

Character indices (siehe 18.21):

```
Byte[] = {4,8,2,3,5,6,6,7,1,0,0,3,4,2,1} //My Hello World
```

Seperator (siehe 18.22):

```
Int32[] = {14,22} (-,-) //M. Sans Serif (14), Times New Roman (22)
```

19 Information about the image field format

19.1 Number of repetitions

The number of repetitions of the loop "FieldImage" depends on the setting bit "UseLanguage" (see 19.2). If the bit is set, the image field format (see 3.20) is repeated for each installed language (see 4.12). If the document is language-neutral, the format is read only once.

19.2 Settings

The settings are used in the "HelpWriter" program. Only the values "UseLanguage" and "UseDownload" affect the file format.

Name	Bit	Description
UseLanguage	0x0001	The image is displayed language-dependent.
UseFullscreen	0x0002	The image can be used in full screen mode.
UseSizeable	0x0004	The size of the image can be adjusted.
UseExpanded	0x0008	The image can be displayed enlarged.
UseEdit	0x0010	The image was created with the program "PicturePaint".
UseDownload	0x0020	The image file is downloaded from the Internet.
UseJpeg	0x0040	The image was compressed JPEG.
UsePng	0x0080	The image was compressed PNG.

Table 19.2: Settings

19.3 Field width

The value indicates the width of the field contents. It can not be smaller than 1 or larger than [20,000 pixels](#). The absolute field width is given by the width (see 21.4). If the setting bit "UseSizeable" is not set, this width will be used for display.

19.4 Field height

The value indicates the height of the field content. It can not be smaller than 1 or larger than [20,000 pixels](#). The absolute field height is specified by the line height (see 15.2). If the setting bit "UseSizeable" (see 19.2) is not set, this height will be used for display.

19.5 Display image

The value indicates the zero-based index for the display image (see 11.6). It can not be smaller than 1 or larger and equal to the number of display images (see 3.10). If the "UseDownload" setting bit (see 19.2) is set, the [download image \(see 3.12\)](#) is specified with this index.

19.6 Original image

The value indicates the zero-based index for the original image (see 11.6). It can not be smaller than -1 or larger and equal to the number of original images (see 3.9). If the [value is -1](#), no original image is needed. Then the image (19.5) is also the original image.

19.7 Image quality

The value indicates the quality of the image when using JPEG compression (see "UseJpeg", Table 19.2). It can not be less than 20 or greater than 100. A value of 100 uses the best quality when creating the image file.

20 Information about the player field format

20.1 Use preview image

The value indicates whether a preview image is used. If the value is 1, the image field format (see 3.20) is read out. There is no preview image if the value is 0.

20.2 Number of repetitions

The number of repetitions of the loop "FieldPlayer" depends on the setting bit "UseLanguage" (see 20.3). If the bit is set, the player field format (see 3.21) is repeated for each installed language (see 4.12). If the document is language-neutral, the format is read only once.

20.3 Settings

The settings are used in the "HelpWriter" program. Only the values "UseLanguage", "UseDownload", and "UseStreaming" affect the file format. In the player field format (see section 3.21), the number of repetitions for the "FieldPlayer" loop is determined by the "UseLanguage" bit.

Name	Bit	Description
UseLanguage	0x0001	The play file is displayed language-dependent.
UseFullscreen	0x0002	The playback is performed in full screen mode.
UseSizeable	0x0004	The size of the presentation can be adjusted.
UseExpanded	0x0008	The presentation can be displayed enlarged.
UseDownload	0x0010	The play file is downloaded from the Internet.
UseRepeat	0x0020	The playback is repeated.
UsePosition	0x0040	The timeline is displayed.
UseVolumen	0x0080	The volume can be changed.
UseStreaming	0x0100	The file can be read directly from the internet server.

Table 20.3: Settings

20.4 Field width

The value indicates the width of the field contents. It can not be smaller than 1 or larger than 10,000 pixels. The absolute field width is given by the width (see 21.4). If the setting bit "UseSizeable" (see 20.3) is not set, this width will be used for display.

20.5 Field height

The value indicates the height of the field content. It can not be smaller than 1 or larger than 10,000 pixels. The absolute field height is specified by the line height (see 15.2). If the setting bit "UseSizeable" (see 20.3) is not set, this height will be used for display.

20.6 Background color

The value specifies the background color for the field contents before the file is played. It can not be less than 0xFF000000.

20.7 Path length

The value indicates the number of characters for the path (url). It can not be less than -1 or greater than 16000. If the length is less than 1, the path is not used.

```
if(FieldImageUrlLength == -1) return null; //Use the value -1
if(FieldImageUrlLength == 0) return String.Empty;
```

20.8 Path

The path consists of a certain number of characters (letters). The path can be a file path or an Internet address. The path length (see 20.7) determines the number of characters. A character is a 16 bit unsigned value. The memory size for the path results from the path length times 2 bytes.

Memory size: FieldPlayerUrlLength * 2Bytes (16Bit)

20.9 File type

The value determines the file type (see 12.2). This value is only read if the setting "UseDownload" or "UseStreaming" (see 20.3) is set.

20.10 Display width

The value determines the original display width in pixels. It can not be less than 0 or greater than 16,000. For the file type "Sound" (see 12.2) the value is 0. This value is only read if the setting bit "UseDownload" or "UseStreaming" (see 20.3) is set.

20.11 Display height

The value determines the original display height in pixels. It can not be less than 0 or greater than 16,000. For the file type "Sound" (see 12.2) the value is 0. This value is only read if the setting bit "UseDownload" or "UseStreaming" (see 20.3) is set.

20.12 Playing time

The value indicates the playing time for the file. It can not be less than 1. This value is only read if the setting bit "UseDownload" or "UseStreaming" (see 20.3) is set.

Playing time: FieldPlayerDuration * 100ns (Nanoseconds)

20.13 Index of play file

The value specifies the zero-based index for the play file (see 12.7). It can not be less than 0 or greater and equal to the number of play files (see 3.12). If the setting bit "UseDownload" or "UseStreaming" (see 20.3) is set, this value will not be read.

21 Information about the field setting format

21.1 Number of repetitions

The number of repetitions of the loop "FieldSetting" depends on the setting bit "UseLanguage" (see 18.2, 19.2 and 20.3) in the field contents. If the bit is set, the field setting format (see 3.21) is repeated for each installed language (see 4.12). If the document is language-neutral or the content is an empty field format (see 3.18), the format is read only once.

If the play format also has an image field format, the setting bit "UseLanguage" must be observed by both formats. If set in a format, the above condition applies to the repetitions of the loop "FieldSetting".

21.2 Settings

The setting bits are used in the program "HelpWriter". Only the values "UseImage" and "UseID" affect the file format.

Name	Value	Description
AlignmentHorizontal_Left	0x0001	The field is aligned to the left.
AlignmentHorizontal_Center	0x0002	The field is centered.
AlignmentHorizontal_Right	0x0003	The field is aligned to the right.
AlignmentVertical_Top	0x0010	The field is aligned upwards.
AlignmentVertical_Center	0x0020	The field is centered.
AlignmentVertical_Right	0x0030	The field is aligned downward.
	Bit	
UseCurve	0x0004	The field is rounded off.
UseShadow	0x0008	The field has a shadow.
UseBackground	0x0040	The field is drawn with background color.
UseBorder	0x0080	The field is displayed with a border.
UseFrame	0x0100	The field has an inner frame.
UseID	0x0200	The field is assigned an ID.
UseVarious	0x0400	The field has a various field format.
UseImage	0x0800	The field has an extra field image.
UseImageAnimate	0x1000	The field image can be animated.
UseImageForeground	0x2000	The field image is drawn before the field content.
UseImageShadow	0x4000	The field image has an extra shadow.

Table 21.2: Settings

21.3 Distances

The set consists of 4 values. The left, top, right, and bottom distances to the adjacent page fields or lines are specified in pixels. The values can not be less than 0 or greater than 10,000 pixels.

See the document "[HelpWriter.tdhr](#)": Page, Settings, Distance

21.4 Field width

The value indicates the width of the page field in pixels. It can not be smaller than 0 or larger than 200,000 pixels.

See the document "[HelpWriter.tdhr](#)": Page, Settings, Width

21.5 Curve

The set consists of 2 values. The X and Y sizes indicate the curves in the corners of the page field. The values can not be smaller than 0 or larger than 1000 pixels. The method "DrawEllipseWidth" (see 13.13) creates the rounding for a rounded rectangle.

```
Int32 PosX = FieldDistanceTop;  
Int32 PosY = FieldDistanceLeft;  
Int32 Width = FieldFrameLeft + FieldFrameRigth + ItemWidth;  
Int32 Height = FieldFrameTop + FieldFrameBottom + ItemHeight;  
UInt32 Color = FieldBorderColor;
```

```
DrawEllipseWidth(PosX, PosY, Width, Height, Int32 RoundX, Int32 RoundY, UINT Color)
```

The value "ItemWidth" is determined by the field width "FieldWidth" (see 21.4) if the setting format "UseSizeable" (see 18.2, 19.2 and 20.3) has been set in the content formats. If the bit is not set, the width (see 18.3, 19.3 and 20.4) of the corresponding content is used.

The value "ItemHeight" is determined by the line height "PageLineHeight" (see 15.2), if in the content formats the setting bit "UseSizeable" (see 19.2 and 20.3) has been set. If the bit is not set, the height (see 19.4 and 20.5) of the corresponding field content is used. For the text field (see 18) the value "ItemHeight" is given by the field height "FieldTextHeight".

See the document "HelpWriter.tdhr": Page, Settings, Curve

21.6 Frame

The set consists of 4 values. The left, top, right, and bottom frames from the page field to the field contents. The values can not be less than 0 or greater than 10,000 pixels.

See the document "HelpWriter.tdhr": Page, Settings, Frame

21.7 Shadow position

The set consists of 2 values. The X and Y coordinates indicate the position of the shadow. The values can not be smaller than 0 or larger than 1000 pixels.

See the document "HelpWriter.tdhr": Page, Settings, Shadow

21.8 Shadow color

The value specifies the ARGB color for the shadow. It can not be less than 0xFF000000.

21.9 Border color

The value indicates the ARGB color for the border. It can not be less than 0xFF000000.

See the document "HelpWriter.tdhr": Page, Settings, Border

21.10 Background color

The value indicates the ARGB color for the background. It can not be less than 0xFF000000.

See the document "HelpWriter.tdhr": Page, Settings, Background

21.11 Position of the field image

The set consists of 2 values. The X and Y coordinates indicate the position of the field image. The values can not be less than 0 or greater than 100,000 pixels. These values are only available if the setting bit "UseImage" (see 21.2) is set.

See the document "HelpWriter.tdhr": Page, Settings, Picture

21.12 Index of the field image

The value indicates the zero-based index for the field image (see 3.8). It can not be smaller than 0 or larger and equal to the number of existing images (see 11.1). This value is only available if the setting bit "UseImage" (see 21.2) is set.

21.13 Start time of the animation

The value specifies the start time for an animation in milliseconds. It can not be less than 0 or greater than 3,600,000ms (1 hour). This value is only available if the setting bits "UseImage" and "UseImageAnimate" (see 21.2) are set.

21.14 Display time of the animation

The value indicates the display time for a partial image in milliseconds. It can not be less than 0 or greater than 3,600,000ms (1 hour). This value is only available if the setting bits "UseImage" and "UseImageAnimate" (see 21.2) are set.

21.15 Shadow position of the field image

The set consists of 2 values. The X and Y coordinates indicate the position of the shadow. The values can not be smaller than 0 or larger than 1000 pixels.

See the document "HelpWriter.tdhr": Page, Settings, Picture

21.16 Shadow color of the field image

The value specifies the ARGB color for the shadow. This color uses the alpha value and can be transparent.

21.17 Length for the ID

The value indicates the number of characters for the ID. It can not be less than 1 or greater than 100. This value is only available if the setting bit "UseID" (see 21.2) is set.

21.18 ID

The ID consists of a certain number of characters. It identifies the page field for a link in other field format (see 22.4). The length (see 21.17) determines the number of characters. A character is a 16 bit unsigned value. This value is only available if the setting bit "UseID" (see 21.2) is set. The memory size for the ID results from the length times 2 bytes.

Memory size: FieldIDLength * 2Bytes (16Bit)

22 Information about the various field format

The various field format (see 3.23) is present if the setting bit "UseVarious" (see 21.2) is set.

22.1 Settings

The bit values all affect the file format.

Name	Bit	Description
UseTipText	0x0001	The field displays a speech bubble.
UseTipTextLanguage	0x0002	The speech bubble is language dependent.
UseLinkPath	0x0004	The field opens a link path.
UseLinkPathLanguage	0x0008	The link path is language dependent.
UseFieldID	0x0010	Jump to a page field with the corresponding ID.
UseFieldIDHorizontal	0x0020	The field is displayed horizontally centered after the jump.
UseFieldIDVertical	0x0040	The field is displayed vertically centered after the jump.
UseHover	0x0080	The field can be highlighted.

Table 22.1: Settings

22.2 Position of the highlighted field

The set consists of 2 values. The X and Y coordinates indicate the position of the field when it is highlighted. The values can not be less than 0 or greater than 127 pixels. This value is only available if the setting bit "UseHover" (see 22.1) is set.

See the document "HelpWriter.tdhr": Page, Various

22.3 Länge für die ID

The value indicates the number of characters for the ID. It can not be less than 1 or greater than 100. This value is only available if the setting field "UseFieldID" (see 22.1) is set.

22.4 ID

The ID consists of a certain number of characters. It contains the ID of a page field (see 21.18). The length (see 22.3) determines the number of characters. A character is a 16 bit unsigned value. This value is only available if the setting bit "UseFieldID" (see 22.1) is set. The memory size for the ID results from the length times 2 bytes.

Memory size: FieldIDLength * 2Bytes (16Bit)

22.5 Number of repetitions

The number of repetitions of the loop "FieldVariousTip" depends on the setting bit "UseTipText-Language" (see 22.1). If the bit is set, the text of the speech bubble (see 22.6 and 22.7) is repeated for each installed language (see 4.11). If the document is language-neutral, the text is read only once.

22.6 Text length

The value indicates the number of characters for the text of the speech bubble. It can not be smaller than 1 or larger than 16,000. This value is only available if the setting bit "UseTipText" (see 22.1) is set.

22.7 Text

The text of the speech bubble consists of a certain number of characters. It is displayed when the mouse cursor lingers for a few seconds over the page field. The length (see 22.6) determines the number of characters. A character is a 16 bit unsigned value. This value is only available if the setting bit "UseTipText" (see 22.1) is set.

See the document "HelpWriter.tdhr": Page, Various

22.8 Number of repetitions

The number of repetitions of the loop "FieldVariousLink" depends on the setting bit "UseLinkPath-Language" (see 22.1). If the bit is set, the link path (see 22.9 and 22.10) is repeated for each installed language (see 4.12). If the document is language-neutral, the path is read only once.

22.9 Path length

The value indicates the number of characters for the link path. It can not be smaller than 1 or larger than 16,000. This value is only available if the setting bit "UseLinkPath" (see 22.1) is set.

22.10 Path

The link path consists of a certain number of characters. It is called when the mouse button on the page field is pressed. The path length (see 22.9) determines the number of characters. A character is a 16 bit unsigned value. This value is only available if the setting bit "UseLinkPath" (see 22.1) is set.

23 Format values and font sizes

23.1 Display factor

The display size of a document is calculated with a display factor.

`DisplayFactor = UnitFactor * (pixel height / monitor height in inches)`

The unit factor is a constant value, which is calculated by a 19-inch monitor with an aspect ratio of 4: 3 and a pixel size of 1280x1024.

`UnitFactor = monitor height in inches / pixel height`
`= 11.4° / 1024`
`= 0.0111328125`

`Monitor height in inches = landscape / root out of aspect ratio`
`= 19° / root out (42 / 32 + 1)`
`= 19° / 1,6666`
`= 11.4°`

For a 19° monitor, 4:3 with 1280x1024 pixels, the display factor is 1.0. For a 24° UHD monitor, 16:9 with 3840x2048 pixels, the factor is 1.94.

`Monitor height in inches = 24° / root out (162 / 92 + 1) = 24° / 2.0397`
`= 11.76`

`DisplayFactor = 0.0111328125 * (2048 / 11.76) = 1.94`

The document factor (see 4.11) corresponds to the display factor when creating the document.

23.2 Display format values correctly

All format values that are used to represent the document must now be multiplied by a factor from the display and document size. The document size is specified in the file format (see 4.11, Document-Factor). The display factor "DisplayFactor" must be calculated from the values of the current monitor. Generally the "DisplayFactor" is 1.0 for an HD monitor (1920x1080) or 2.0 for a UHD-1 monitor. The maximum factor of 4.0 is used on a 24° UHD-2 monitor (7680x4320).

Example: Character width (see 10.3)

```
LetterWidth = LetterWidth * Displayfactor / Documentfactor
```

Example: Left outline frame (see 13.4, the value is rounded off)

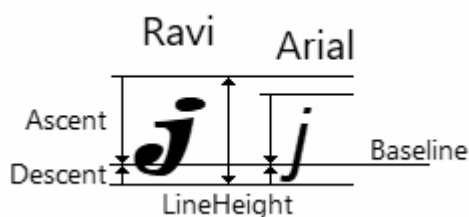
```
OutlineFrameLeft = OutlineFrameLeft * Displayfactor / Documentfactor
```

Example: Page field width (see 21.4, the value is rounded off)

```
FieldWidth = FieldWidth * Displayfactor / Documentfactor
```

23.3 Text height and different fonts

The fonts "Ravi" and "Arial" were created with a size of 40 pixels. As shown in figure 23.2, the value "Ascent" is greater for "Ravi" than for "Arial". This results in the total height "LineHeight" of the text line from the part heights "Ascent" and "Descent" of the font "Ravi". In addition, the baseline "Baseline" is given by the font "Ravi".



In general, the graphic (23.3) should show that fonts with the same size can have different part height. Therefore, the row height and baseline must be determined from the largest values of "Ascent" and "Descent".

Figure 23.3: Text height

23.4 Square size of fonts

The square heights can be retrieved from the font family. These values are used to calculate the font height and the representation. The square size "EmSize" is approximately 2048 pixels and is used in the font style (font design). Thus, it is an ideal value for the calculation of the font height, e.g. when enlarging a letter.

```
//Font: System.Drawing.Font
Int32 EmSize = Font.FontFamily.GetEmHeight(Font.Style);
Int32 EmAscent = Font.FontFamily.GetCellAscent(Font.Style);
Int32 EmDescent = Font.FontFamily.GetCellDescent(Font.Style);

Single Size = Font.Size;
```

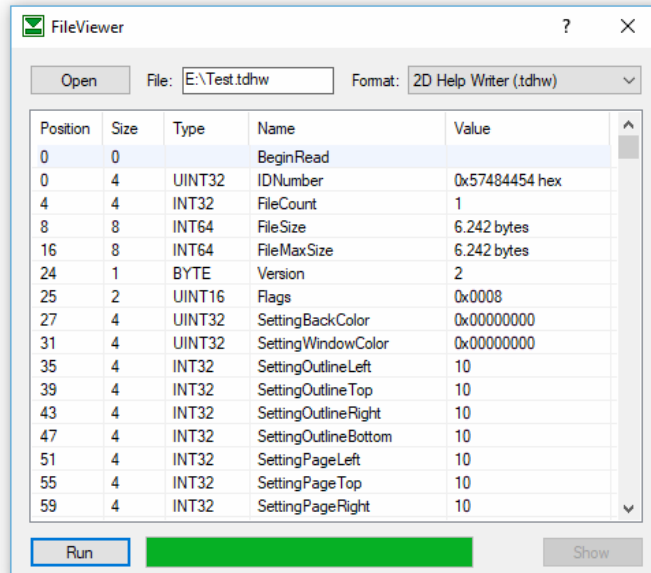
Example: Calculation of heights "Ascent" and "Descent" (the values will be rounded down later)

```
Ascent = EmAscent * Size / EmSize
Descent = EmDescent * Size / EmSize
```

```
LineHeight = Ascent + Descent
```

24 Program for reading the file format

On the PanotiSoft website, there is a test program under technical documents, with which the file format can be read out in a structured manner. In addition, the program code can also be downloaded. The program was written under Visual Studio 2008 with the programming language C#.



Program: FileViewerX64.zip oder
FileViewerX32.zip

Project file: FileViewerCode.zip

Description: FileViewer.pdf

FileViewerCode:

Format file: FileViewerFormat.cs

Format class: FileViewerTDHelpWriter